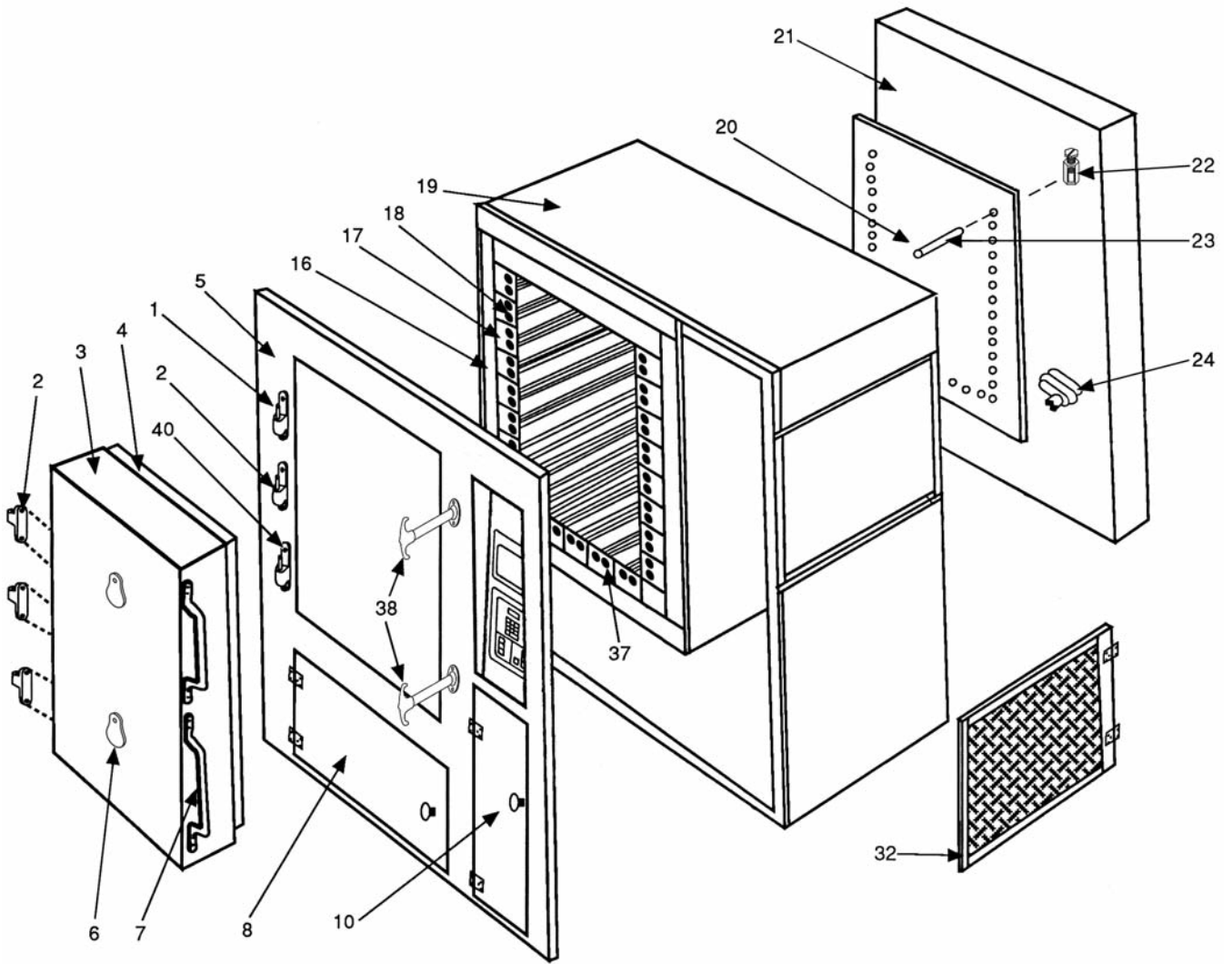


AMACO® High Temperature Electric Kiln AH-30

240 Volts AC, Three Phase



See page 2 for replacement parts list that corresponds to the numbers on this drawing.

REPLACEMENT PARTS LIST
AMACO® HIGH TEMPERATURE ELECTRIC KILN
AH-30

DETAIL NO.	PART NO.	DESCRIPTION	PARTS/ KILN
1	26072G	Hinge Pins	3
2	28073H	Door Hinge	6
3	*	Door Metal Shell W/Bottom Only	1
	28251J*	Door Complete - No Hardware	
4	28491E	Door Brick, Set	1 Set
5	*	Front Frame	1
6	29025C	Peephole Cover	2
7	28129H	Door Handle	2
8	*	Cabinet Door Bottom	1
10	*	Cabinet Door Side	1
16	28486N	Side Insulation	2
16	28487P	Top Insulation	1
16	28487P	Bottom Insulation	1
16	28487P	Back Insulation	1
16	28490T	Door Insulation	1
17	28493W	Top Brick	1
17	28494X	Bottom Brick	1
17	28495Y	Side Brick - Set	2 sets
17	28498C	Back Brick	1 set
18	28505K	Element Coil	21
19	*	Shell	1
20	*	CEM-Fil (Back Panel)	1
21	*	Back Terminal Guard	1
22	28409N	Terminal Lug #SLU-125	42
23	27896T	Insulator, ceramic	42
24	28418L	Fitting Conduit	1
32	*	Side Door (Expanded Metal)	1
37	28501F	Bottom Brick Base (Sub floor) base	1 set
38	28153X	Latch, Door	2
40	+	Hinge Bolts (self-tapping)	12

- * Special Order Item. Allow extra time for shipment.
- + Standard Hardware/Electrical Item available locally.
Prices available upon request.

General Information

The AMACO® AH-30 High Fire Kiln has a maximum attainable temperature of Cone 10 (2381°F, 1305°C). The average fast-fire time required for this kiln to reach 1950°F (1066°C) is 8 hours. The AH-30 is equipped with the Select Fire™ Computer Control for precise control, convenience, and consistent results firing after firing. During every firing, pyrometric cones should be placed in the kiln so that they can be viewed through the peephole(s).

This booklet contains a wiring diagram for the AH-30 kiln, Select Fire™ Controller and a parts list with accompanying drawing for the AH-30 and Select Fire™. Before installing the kiln, consult these diagrams for recommendations on electric service, fuses, etc.

Also included with this booklet is an AMACO® Electric Kilns Installation/Operation/Maintenance manual, which includes important information about selecting a location for your kiln, firing guidelines, and do-it-yourself instructions for replacing elements, plus complete programming and operating instructions for the Select Fire™ Controller.

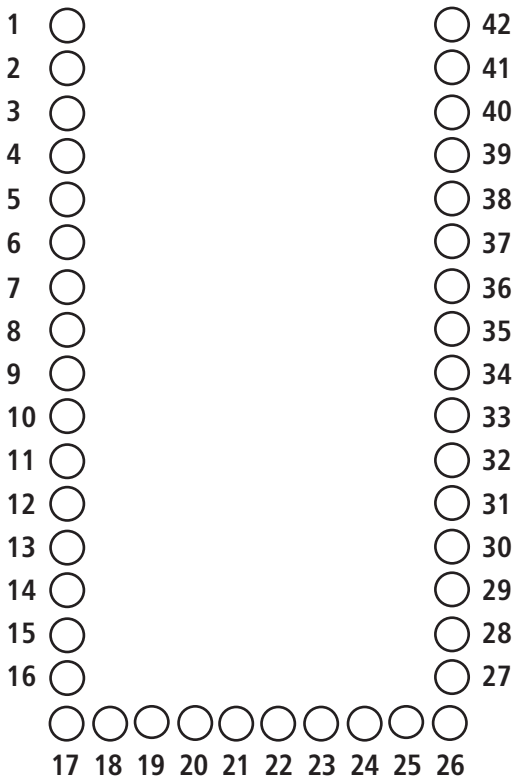
Place kiln at least 18 inches from any existing wall at the sides and back. Connect kiln to an electric circuit which corresponds to that stamped on the kiln name plate. No. 6 gauge wire or larger should run from the power supply to the fused safety switch box on the kiln. 45 ampere fuses are required.

Testing For Defective Elements and Improper Heating

Use the diagram below, the AH-30 Wiring Diagram, along with the information found in the Installation/Operation/Maintenance manual to safely inspect and replace elements. The diagram indicates the position of the coil terminal wires as viewed from the rear of the kiln. Plug in test lamp and touch lamp leads to terminals 1 and 2. If lamp lights, the circuit is good. Proceed with the other coils, connecting 3 and 4, 5 and 6, etc. Any connections where lamp fails to light will indicate a defective coil

AH-30 Testing Diagram

Element terminals, Rear View



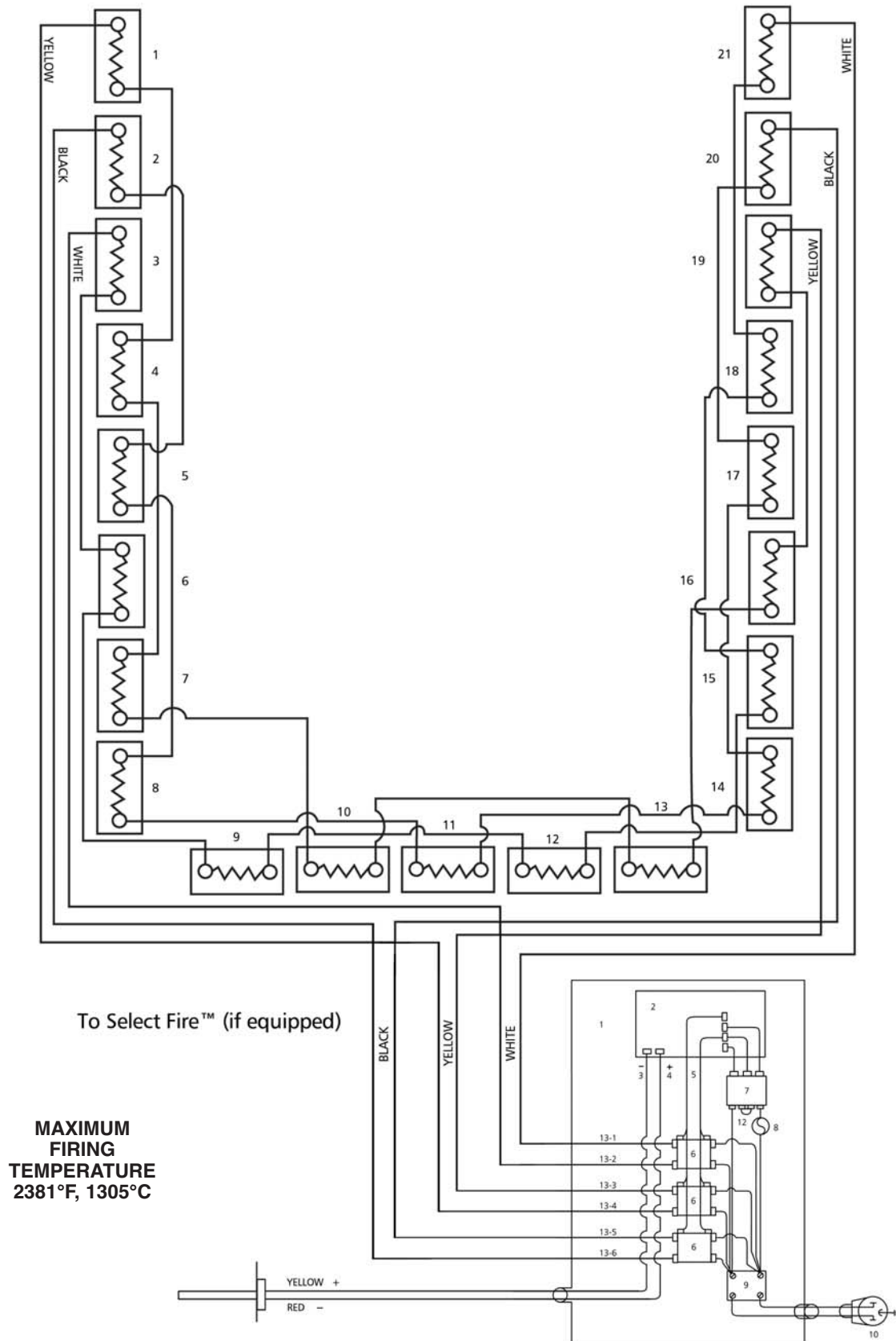
KILN SPECIFICATIONS AH-30

(Three Phase Only)

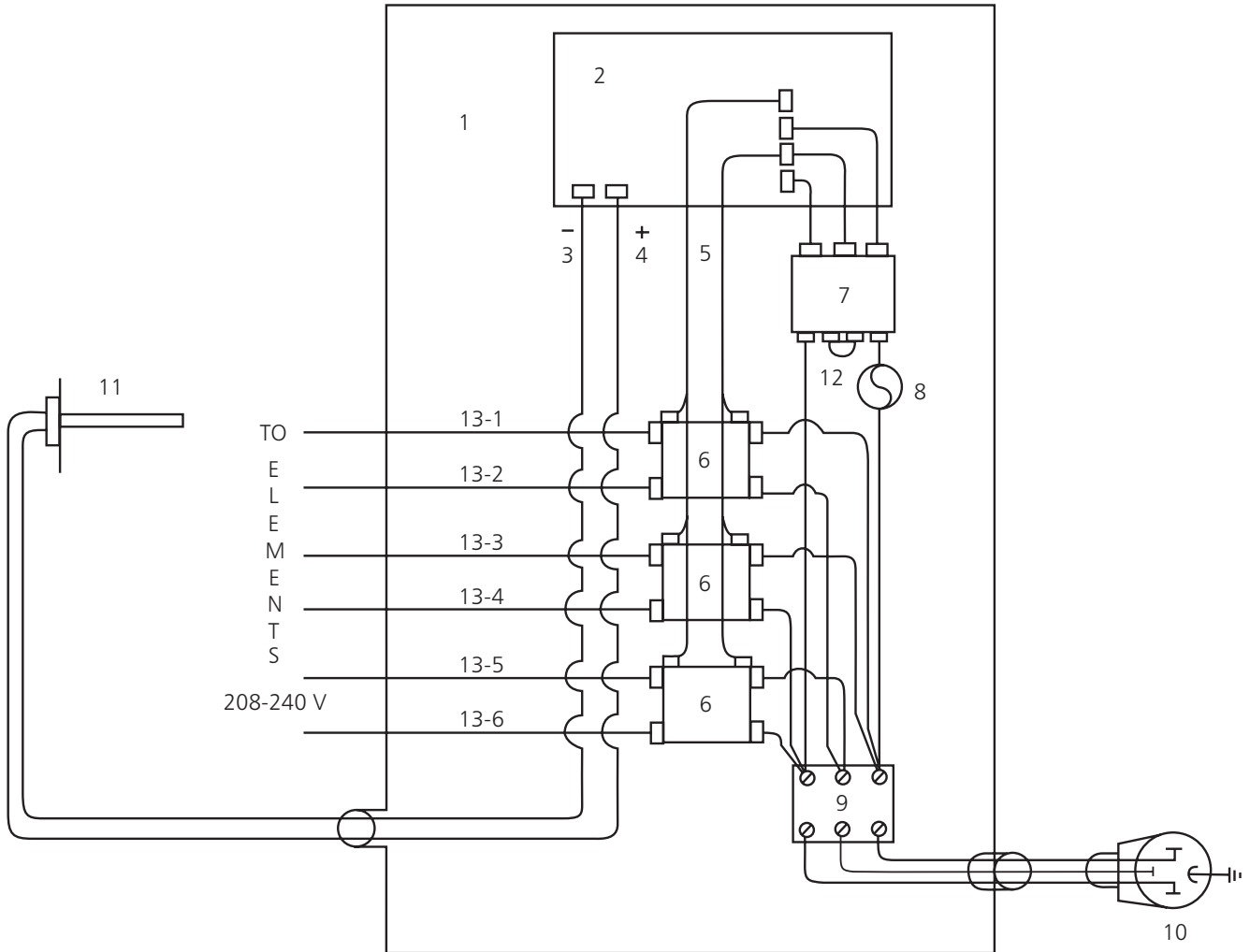
Voltage.....	208/240 Volts AC
Amp Rating	32.0 at 208V/38.6 at 240V
Kilowatt Rating	16.0
Firing Speed Control.....	Select Fire™ Computer Control
Maximum Temperature	2381°F, 1305°C
Firing Chamber Dimensions (W x D x H)	20" x 20" x 36"
Firing Chamber Area.....	8.33 cubic feet
Exterior Dimensions (W x D x H)	45" x 38 1/2" x 66 1/2"
Elements	21
Shipping Weight.....	1495 lbs.

AMACO[®] High Temperature Electric Kiln AH-30

240 Volts AC, Three Phase



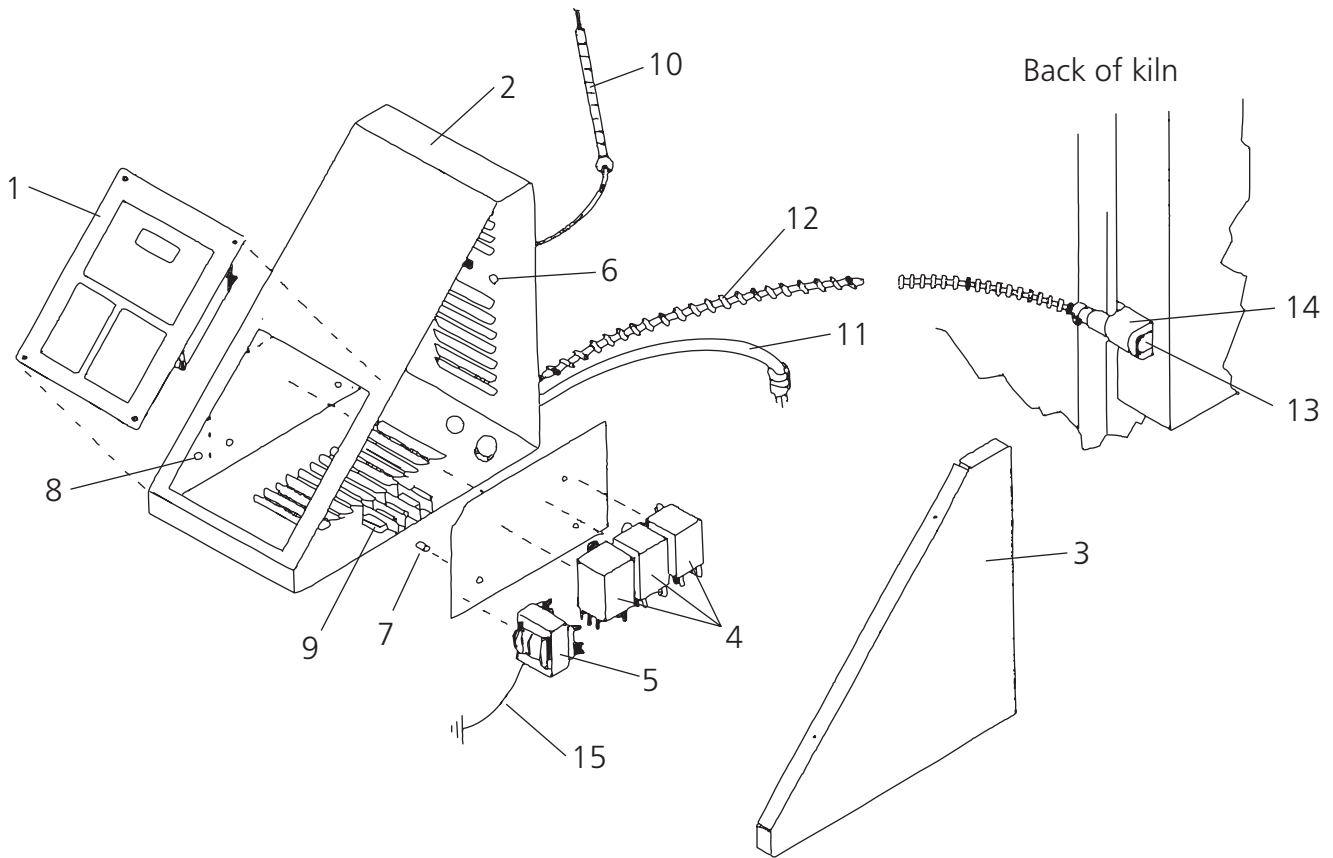
SELECT FIRE™ Automatic Kilns 3 Relay Three Phase



- | | | | |
|---|--------------------------------------|----|-----------------------------|
| 1 | Select Fire™ Master Panel | 8 | Fuse |
| 2 | Select Fire™ Electronic Control Unit | 9 | Terminal Block |
| 3 | Red Wire | 10 | 208/240V Plug |
| 4 | Yellow Wire | 11 | Thermocouple |
| 5 | Control Signal Wire | 12 | Jumper Wire for Transformer |
| 6 | Relay | 13 | Wires to Terminal Strip (6) |
| 7 | Transformer | | |

REPLACEMENT PARTS LIST

SELECT FIRE™ COMPUTER CONTROL



1	24250P	Select Fire Control	1
2	*	Select Fire Control Box	1
3	*	Select Fire Control Box Cover	1
4	24276H	Relays	3
5	24278K	Transformer	1
6	22134W	Fuse Holder	1
7	*	3/16" spacer	3
8	*	5/8" spacer	3
9	27749M	Terminal Block, 60 amp	1
10	28846V	Thermocouple, 72" long lead wire	1
11	28674D	Power cord with plug, three phase	1
12	*	Power to coils	1
13	28418L	Conduit Fitting	1
14	28419M	Conduit Cover	1
15	*	Ground (14 gauge wire)	1

*Special order item. Allow extra time for shipment.



American Art Clay Co., Inc. • 6060 Guion Rd., Indianapolis, IN 46254
(800) 374-1600 • www.amaco.com