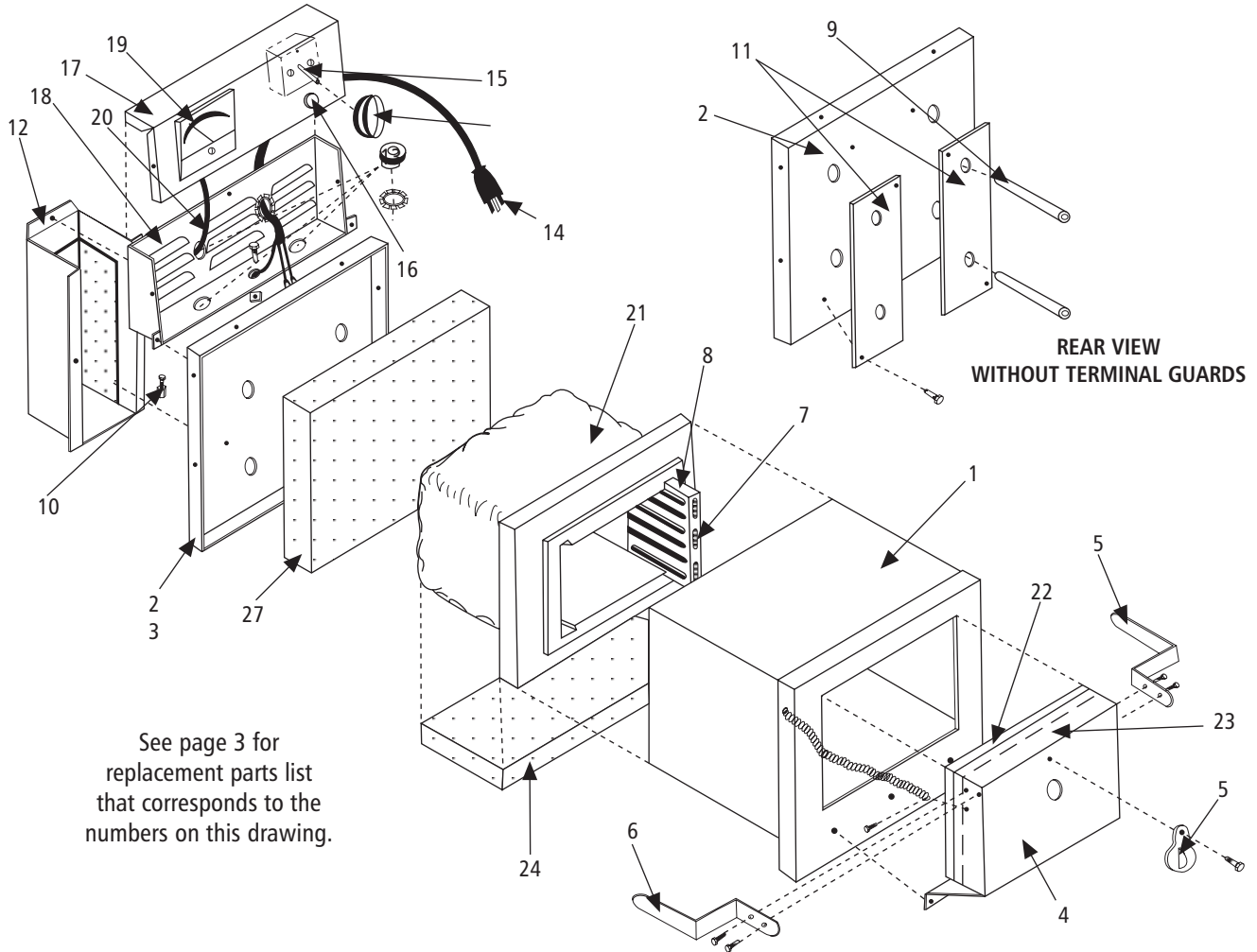


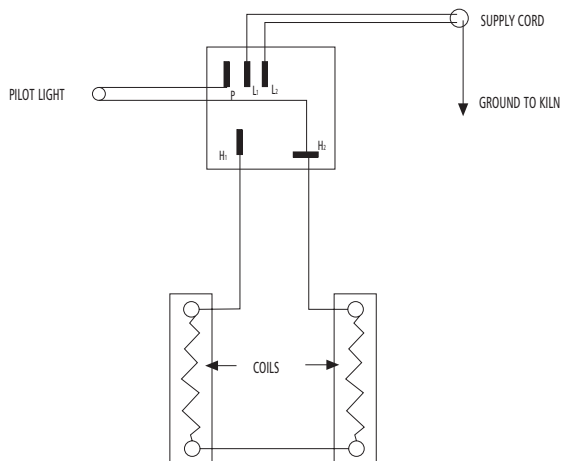
AMACO® Metal Enameling Kiln 67-EFC

110-120 Volts AC, Single Phase



See page 3 for replacement parts list that corresponds to the numbers on this drawing.

110-120 Volts AC, Wiring Diagram
Single Phase



MAXIMUM FIRING TEMPERATURE
2000°F (1093°C)

AMACO® METAL ENAMELING KILN NO. 67-EFC

INSTALLATION

This kiln is equipped with a 15 ampere supply cord and plug. A 110-120 volt, 15 ampere outlet is required. Two door handles and one floor shelf are packed separately and must be installed. The handles are mounted one on each side of the door shell where mounting holes will be found. The shelf is placed on the floor of the firing chamber.

FIRING INSTRUCTIONS

The temperature at which most metal enameling is done is approximately 1500°F (815°C), allowing for some drop in temperature when kiln door is opened to place work piece in kiln. To prepare the kiln for enameling, turn control switch to "Hi". On "Hi", a continuous flow of current passes through the element coils, and 1500°F (815°C) will be achieved in about 1 hour and 15 minutes. The switch should then be reset at a lower point to hold the temperature. CAUTION: If the switch is left on "Hi", the kiln will quickly over-fire! Proper holding position for the switch must be found by experimentation, usually between 5 and 6. In this switch position you will note that the pilot light will blink off and on, indicating intermittent power supply to the coils, performed automatically by the switch to provide complete control over kiln temperature. This kiln may be used for firing small clay pieces placed in cold kiln and fired as in any pottery kiln.

TESTING FOR DEFECTIVE ELEMENTS

1. **DISCONNECT KILN FROM RECEPTACLE!** This is a safety measure which must be followed.
2. Turn control switch to "Off" position. Remove metal protective guard on back of kiln. Element terminal wires will be exposed as they protrude from wall of kiln. The wiring diagram indicates the position of these terminals as viewed from the rear of the kiln. Plug in test lamp (See page 7 in #2 Repair Manual). Contact terminals 1 and 2 with lamp leads. If lamp lights, element is good. Repeat test across terminals 3 and 4. Any test that fails to light the lamps Indicates a defective coil.

HEATING ELEMENT REPLACEMENT

When a broken coil is found, both coil and holder must be removed from the kiln. Always work on one coil at a time to avoid confusion. Disconnect element terminal wires from jumper wires. This will free the element assembly so that it may be pulled through the open door of kiln. Remove the damaged coil from the holder and inspect the holder. Any foreign material in the holder that will contact the new coil will cause early coil failure. If the channels are clean, the holder need not be replaced—a new coil is then strung through the channels of the holder. The assembly is then pushed back into place carefully threading the twisted terminal wires through the porcelain insulator running through the back wall of the kiln. The terminals should be cut off, leaving only enough wire to reconnect the jumper wire. Insure a very tight connection between terminal and jumper wire by tightening the connector screw.

REPLACEMENT PARTS LIST
AMACO® METAL ENAMELING KILN
67-EFC

DETAIL NO.	PART NO.	DESCRIPTION	PARTS/ KILN
1	*	Shell & Front Assembly	1
2	*	Shell Back	1
3	*	Door Shell & Hinge Assembly	1
4	29025C	Peephole Cover	1
5	*	Handle	2
6	28987L	Element Coil, 110 Volts	2
7	28995E	Holder - Element	2
8	28069D	Insulator #PT-12	4
9	28071F	Terminal Lug #10-U	4
10	28928W	Cem Fil	2
11	*	Terminal Guard	2
13	29970L	Supply Cord Assembly W/15 A. Cap	1
14	28067B	Switch Inf. - Control 120 Volts	1
15	28935E	Pilot Light Assembly, 110 Volts	1
16	*	Instrument Panel	1
17	*	Switch Panel Box	1
18	28825W	Pyrometer (Optional Item)	1
19	28840N	Thermocouple, 24" long, 7" probe	1
20	29027E	Chamber - Fiber	1
21	29028F	Door - Fiber	1
22	29029G	Insulation - Door	1
23	29030H	Insulation - Lower	1
24	29031J	Insulation - Back	1
	28897B	Insulation - Loose	2 1/4#
	28898C	Repair Cement	Pt.
27	28128E	Knob - Inf. Control	1

* Special Order Item. Allow extra time for shipment.



American Art Clay Co., Inc. • 6060 Guion Rd., Indianapolis, IN 46254
(800) 374-1600 • www.amaco.com